



# COMPANY PROFILE



Management  
System  
ISO 9001:2015  
ISO 45001:2018  
[www.tuv.com](http://www.tuv.com)  
ID 9105016326



BOD, Vision, and Mission

Quality and HSE Policy

About Us

Competencies and Capabilities

Awards and Cerfitications

Products and Services

Portofolio

Contact Us

## TABLE OF CONTENTS





# BOARD OF DIRECTORS, VISION, AND MISSION

## Commissioner and Board of Directors

---

### Commisioner

Hendra Arifin

### President Director

Djoko N. Labbaika

### Directors

M. Yani Setiawan

Freddy Sutjipto

## Vision and Mission

---

### Vision

Being a telecommunication provider of services that is reliable and trustworthy, supported by information technology products that always provide superior quality.

### Mission

Providing excellent service quality and customer-oriented to fulfill every need of information technology products and telecommunications networks, especially trunking radio telecommunications networks.



# QUALITY AND HSE (HEALTH, SAFETY AND ENVIRONMENT) POLICY

## QUALITY MANAGEMENT SYSTEM ISO 9001:2015, OCCUPATIONAL HEALTH & SAFETY MANAGEMENT SYSTEM ISO 45001:2018

PT Nexcom Indonesia, as a provider of trunked radio services, is committed to adhering to regulations and continuously improving our systems. We have established policies as a framework for implementing quality objectives and K-3 targets to achieve a high Grade of Service (GOS), ultimately enhancing customer satisfaction and ensuring a healthy workforce while minimizing workplace accidents.

Our top management is dedicated to consistently improving the K-3 system and takes full responsibility for delivering quality service and maintaining health and safety standards to create a “zero accident” work environment. They are focused on building an effective Quality Management System (QMS) and obtaining HSE Certifications, regularly enhancing effectiveness based on feedback from customer satisfaction surveys.





PT Nexcom Indonesia was established in 2011 as a National Trunked Radio Provider with Operating Licenses for Terrestrial Radio Trunking Network and National Microwave Link License, and has ISO 9001:2015 and ISO 45001:2018 by TUV Rheinland Certified Standardization.

PT Nexcom Indonesia has the largest public trunked coverage in Indonesia, covering Several Jakarta, Several West Java, Several Banten, Several East Java, Papua, and Several other sites based on projects. We give you more benefits by interconnecting the areas with each other. We also develop remote trunked radio service in South Sumatra, Lampung, Central Kalimantan, Central Sulawesi, and Papua.

PT Nexcom Indonesia has now grown into a **Radio, Telecommunication, Security, Access Control, and IT solution provider**. As the largest trunked radio provider in Indonesia, our company has been involved in planning, building, and maintaining trunked radio systems in partnership with multinational companies in oil and gas, construction, harbour, and hospitality.

## Our Engineer is expertised in:

- Radio & System
- Radio Microwave
- CCTV
- Canopy Access Point
- CCNA
- Tower Climbing
- T-BOSIET
- Working at Height
- IRCA ISO & OHSAS
- Occupational Health and Safety (OHS)
- TKDN (Tingkat Komponen Dalam Negeri)
- PMP (Project Management Professional)

Along with expanding its business in trunked radio services, PT Nexcom Indonesia has developed other diverse telecommunication services that can be integrated with supporting products such as solar cell systems, microwave radio, tower infrastructure, CCTV, and Access Control, etc. PT Nexcom Indonesia has contractual agreements with high-profile manufacturers such as Motorola, SAF, Kenwood, Hytera, RFI, Hikvision, AXIS Communications and many more.



# COMPETENCIES AND CAPABILITIES

## INSTALLATION AND MAINTENANCE

Our company employs experienced project engineers capable of installing and maintaining telecommunication projects of any size and location throughout the archipelago of Indonesia

## MANAGED SERVICES

Get more efficient, improve your operations, and cut expenses by staying up to date on technology, having access to necessary skills, and addressing a range of issues related to cost, quality of service, and risk with comprehensive trunked radio system service management.

## PRODUCT DEVELOPMENT

Along with the development of telecommunication, we seek to continue to build a competent quality with emphasis on the development of quality products in order to give satisfaction to customers.

## TELECOMMUNICATION & IT SOLUTIONS

To meet customer satisfaction, especially in the field of Information Technology, we offer system integration capabilities including design, planning, installations, and maintenance tailored to our customers' telecommunication IT requirements.

## DESIGN ENGINEERING

Our experience in providing solutions and platform integration, led by a qualified business and technical team, involves handling platforms and delivering high-quality design with a high-value integrated system for clients. With this experience, we can make our client a technology-based company.

## CONSTRUCTION MECHANICAL & ELECTRICAL (CME)

Construction work of buildings or rooms for a radio site, along with electrical and air conditioning installations

## PROJECT MANAGEMENT

Our company employs an experienced project management team able to supervise all telecommunication infrastructure projects. Our project management team is continuously updated on the latest developments in the field of telecommunications.

## EXPORT & IMPORT

We maintain distribution agreements with both national and international organizations, being their main product supplier.





# AWARDS AND CERTIFICATIONS



Platinum Authorized Reseller Motorola Solutions



Solutions Partner of the Year  
2024



Solutions Partner of the Year  
2016




Solutions Partner of the Year  
2018-2019

# PRODUCTS AND SERVICES



**RADIO  
TRUNKING**



**PUSH-TO-TALK OVER  
CELLULAR (POC) RADIO**



**MICROWAVE LINK**



**CCTV AND ACCESS CONTROL**



**ANTENNA  
TOWER**



**BODY-WORN CAMERA**

**TOWER**





# RADIO TRUNKING

We build, develop, and maintain trunked radio systems for public and private business services used in remote areas to supply on-site Radio Communications for the Mining, oil, and Gas industries, and government organizations.

We provide turnkey telecommunication infrastructure programmes, including towers, shelters, power, and radio products and services.

Our public radio network coverage are:

- Several [Jakarta](#)
- Several [West Java](#)
- Several [Banten](#)
- Several [East Java](#)
- [Papua](#)
- *Several other sites based on projects*



## XIR P6600

- Battery life up to 28 hours
- Waterproof IP67
- Loud and clear audio,
- Cost-effective
- HazLoc models are available for flammable or explosive areas.



## XIR P8660/P8668i

5-line display, full keypad, up to 1,000 channel capacity, programmable buttons, emergency button, and FM safe option.

\*not available non-GPS/Bluetooth model, XiR P8660.



## Motorola R7

A digital portable two-way radio that offers game-changing audio capabilities in a rugged, future-ready device.



## XiR M8660 / M8668 Mobile Radio

Fully-featured mobile, voice and data with integrated Bluetooth, integrated GPS, text messaging, and full 4-line color display with day/night mode.



## XiR M6660 Digital Mobile Radio

Compact and affordable mobile radio digital systems capability.

# POC (PUSH-OVER-CELLULAR) RADIO



## TLK100

A strong communication solution for businesses nationwide coverage, real-time tracking, and integration.

PoC enables customers to achieve long-distance communications without the need for additional networks or repeaters. Therefore, 3G/4G-based PoC radios can save the customer additional investment.

For customers from certain business sectors where the reliability and security of voice communications can be compromised, PoC is an ideal solution, as it focuses on voice communication and offers multimedia application functions, delivering and positioning itself as a useful complement. Undoubtedly, there is a huge market potential for these products.



## TLK110

Combines the flexibility of POC via broadband with the reliability of a rugged, purpose-built radio.



## TLK150

Mobile two-way radio is powerful and flexible work group communication tool for secure PTT on the go.



## WAVE PTX DISPATCH

Login from any Internet connection and manage your mobile workforce from anywhere.



## PNC360s

Compact size as it is one-hand operation, rugged, and easy to operate



## PNC380

Compact design with large PTT button, screen and full keypad, high durability, and camera for real-time video.



## MNC360

High-resolution camera with advanced autofocus and clarity.



# MICROWAVE LINK

Microwave links using full duplex communication with a very high stability and can be applied a redundant to maintain the performance of that links communications system that uses radio waves in the microwave frequency range to transmit video, audio, or data between two separate locations, which can be used from just a few meters to several kilometers.

## Benefits:

- Sending video and audio on the TV Broadcasting
- Sending data from MSC to BTS on cellular provider
- Internet data transmission on internet provider



**SAF Integra E**  
Split Mount Radio  
System  
up to 10 Gbps  
(Outdoor Unit)



**SAF Integra G**  
Split Mount Radio  
System  
up to 1 Gbps  
(Outdoor Unit)



**SAF Integra W**  
Split Mount Radio  
System  
883 Mbps  
(Outdoor Unit)



## CFIP PhoeniX G2

Split Mount Radio System  
455 Mbps, Band Frequency  
4/6/7/8/10/ Full Duplex  
(Indoor Unit)



## SAF Integra X

Split Mount Radio  
System  
up to 2 Gbps  
(Outdoor Unit)



## CFIP PhoeniX G2

Split Mount Radio  
System  
455 Mbps, Full Duplex  
(Outdoor Unit)



## Microwave Spectrum

Compact Analyzer  
Frequency Range  
~87GHz

# CCTV AND ACCESS CONTROL



## P1385-E

High-resolution camera with advanced autofocus and clarity.

We can design, build, and install a CCTV monitoring system that meets customer requirements.

Features and Benefits of CCTV:

- Can be integrated with other security systems (alarm or surveillance systems, etc.)
- Remote monitoring through LAN, WAN, wireless, and the internet
- User-friendly system
- A cost-effective way of maintaining security
- Creates a safe and controlled environment

Access Control is used for monitoring and managing activities for security reasons, efficiency, and effectiveness. The system could be a CCTV System, RFID Tag, and Access Card system



## Q6355-LE PTZ

ARTPEC-9, AI-powered PTZ with great detail and high performance in all light conditions.



## Q3536-LVE Dome

ARTPEC-8, robust camera can withstand the harshest weather conditions and the most powerful impacts.



## P3737-PLE Panoramic

4\*5 MP at 20 fps per channel, 360° IR illumination with individually controlled LEDs, flexible mounting options, support for AI analytics



## P1468-LE Bullet

Lightfinder 2.0, Forensic WDR, Optimized IR, audio and I/O connectivity, built-in cybersecurity features, impact and weather resistant.



## DS-2CD1121-I

2 MP Fixed Dome Network Camera, 2 MP resolution, efficient compression and clear back light.



## 2.0C-H4A-B3(-B) H4

Patented Advanced Video Pattern Detection and Patented High Definition Stream Management (HDSM)



## iDS-7716NXI-M4/X

Intelligent analytics based on a deep learning algorithm, up to facial recognition for video stream, or facial recognition for face picture

**HIKVISION**



Radio antennas significantly enhance radio system performance by extending communication range, improving signal clarity, and optimizing transmission efficiency.

They enable reliable communication over longer distances, especially in challenging environments, and play a crucial role in various applications like emergency services, broadcasting, and personal communication.



## UHF Vertical Collinear (380-520 MHz COL7)

A lightweight collinear design with minimal wind loading, making it ideal for mounting on moderate support structures



## UHF Vertical Collinear (380-520 MHz) COL8

Split Mount Radio System  
455 Mbps, Band Frequency  
4/6/7/8/10/ Full Duplex  
(Indoor Unit)



## UHF Meander Collinear (380-400 MHz) COL45-400-P

Split Mount Radio System  
455 Mbps, Band Frequency  
4/6/7/8/10/ Full Duplex  
(Indoor Unit)



## UHF Vertical Collinear (380-520 MHz) COL8

Split Mount Radio System  
455 Mbps, Band Frequency  
4/6/7/8/10/ Full Duplex  
(Indoor Unit)

# BODY-WORN CAMERA



Capture every incident effectively while deterring theft and aggression with body cameras that are specifically designed to seamlessly integrate into your day-to-day operations.

Our state-of-the-art body camera technology ensures that you have a reliable and unobtrusive way to document any incidents that may occur while also acting as a strong deterrent against any potential security threats.

We provide high-quality body-worn cameras and partner with trusted brands and industry experts. Our commitment to excellence is reflected in our cutting-edge products, designed to meet the highest standards of quality and reliability. Whether you are in law enforcement, security, or any field requiring dependable video documentation, we have the perfect body-worn camera solution for you.



## VB500

A radical evolution of our industry-leading body camera platform, enabling you to leverage real-time intelligence for a more collaborative, effective response.

## VT100

A new perspective when it matters most. The VT100 delivers a customizable and fully integrated enterprise mobile video solution. 720p HD video. Remote alarm activation. Customer-friendly design. Seamless integration with existing CCTV.

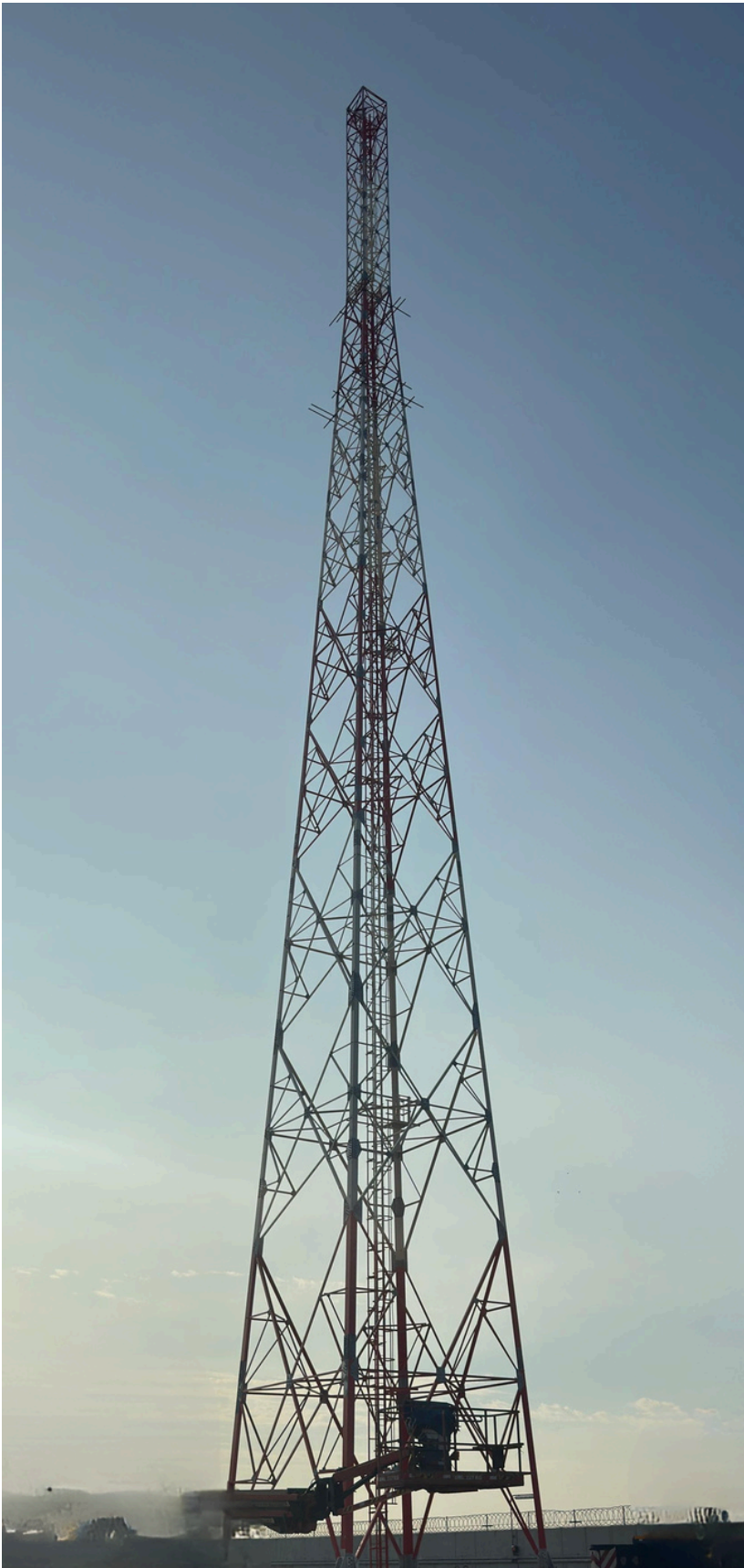


## VB400

An independent witness for security guards and police officers. The VB400 body camera is designed to make it easy for your team to capture high-quality, first-person video - whether they're working in security or policing.



# TOWER INFRASTRUCTURE



SST stands for "Self-Supporting Tower," which can be defined as a tower designed to support itself without requiring additional support from other structures or buildings. SST towers are generally used for various purposes such as communication, transmission, observation, or energy generation.

The height of SST towers can also vary, ranging from 20, 36 and 72 meters.

Our company has extensive experience in tower infrastructure for various industries, including oil and gas, transportation, and more. SST towers are often used as an alternative to towers with additional supports, such as guyed towers or monopole towers, because SST towers do not require a large area of land and can be placed in hard-to-reach areas.

Tower Triangular

Tower Monopole

Tower Rectangular

# PORTOFOLIO

Freeport Indonesia  
Day Wireless System (*Microsoft Project*)  
Sumbawa Timur Mining  
Star Energy  
BP. Berau, Ltd.  
Pupuk Kalimantan Timur  
Terminal Petikemas

Bank Central Asia  
Agung Sedayu Group  
Podomoro Land Group  
Telkom Landmark Tower  
Jasa Marga Toll-Road Operator  
Jasa Marga Toll-Road Command Centre  
Jaya Pratama  
Birotika Semesta - DHL  
Berlian Jasa Terminal Indonesia





## Head Office

- Gandaria 8 Office Tower 18 Floor, DKI Jakarta 12240
  - Komplek Golden Plaza Blok J-5, Jl. RS Fatmawati No.15, DKI Jakarta 12420
- +621 7511 225 (Hunting)

## Surabaya Office

Jl. Sidosermo 5 No. 12, Surabaya 60239  
+6231 849 3131

## Sales Marketing

+6281 1966 896  
[sales.marketing@nexcom.co.id](mailto:sales.marketing@nexcom.co.id)

## Customer Service

+6281 1886 688  
[customerservices@nexcom.co.id](mailto:customerservices@nexcom.co.id)

 [www.nexcom.co.id](http://www.nexcom.co.id)